

Whitton Times

Easter 2025



Church in Community

"Welcome to Whitton Times,
a blend of Church
and Community,
a magazine from us to you".
We hope you'll find it helpful .



It is a very special thing to watch the sunrise any day but even more so on Easter morning, especially if it is a beautiful one such as here, it was a glorious sunrise as we gathered to celebrate the Resurrection of Jesus early on Easter day 2019. Just as the sunrise brings a new day and a new start and a new hope each morning, so the resurrection brings an amazing hope. No, promise!



Welcome to the spring issue of 'Whitton Times'. As I write there is a hint of spring as we have enjoyed a day or two of warmer weather and we look to changing the clocks on Sunday. As Christians we are also journeying through Lent, a season of reflection, and seeking to live in a way that shows the great love of the God we believe in.

If we look around the world it is hard to see much evidence on the world stage of love, hope, peace and joy and this can, I am sure, make us feel powerless as individuals to do very much about it all. However, if we are all saying this and we all seek to make a difference and show God's love in our lives in the small corner of the world he has placed us, then we can and will make a difference.

I was asked by a child on a recent visit to a primary school why there are 10 Commandments in the Old Testament, but Jesus only gave us two. The answer is simple to Christians, as the two Jesus gave us were to love the Lord your God with all your heart, with all your soul, with all your mind, with all your strength, and love your neighbour as yourself, for love is the fulfilling of the law. So, if we do these two things, we cannot break any of the 10 commandments and these two go a lot further as well.

Christians are an Easter people, a people of hope, hope in the resurrection of Jesus who died for the love of each of us. We seek to make sharing that love, peace and fellowship as we encourage and support each other on our journey of life, central to all our church services and activities at Whitton. Why not come along and share this with us. I will leave you with the lovely words of the hymn by Fred Khan.

Revd Mary

Put peace into each other's hands
and like a treasure hold it;
protect it like a candle flame,
with tenderness enfold it.

Put peace into each other's hands,
like bread we break for sharing;
look people warmly in the eye:
our life is meant for caring.

Put peace into each other's hands
with loving expectation;
be gentle in your words and ways,
in touch with God's creation.

Put Christ into each other's hands,
he is love's deepest measure;
in love make peace, give peace a chance
and share it like a treasure



The Top Up Shop is **open to everyone**. There are **no questions asked** (apart from contact number and post code in case of product recall). There are no criteria to fulfil. If you need food or just need to top up your food supplies, please come and see us. The cost is £2 for a recyclable bag. Each week we have a good choice of goods and always fresh fruit and vegetables. **We are open from 11am to 12.15pm every Wednesday in the Church Hall, Whitton Church Lane. Coffee and cake are available in the church from 9.30 –11.30am.** You can be assured of a warm welcome. We look forward to seeing you.



Parish of Whitton Page.

Many have found us on 'Facebook Live' for Sunday services and for 9pm Compline each evening. If you would like to know more or simply make contact, please either use the 'messenger' facility or email: marysokanovic@outlook.com





You Are Warmly Invited to all our
Holy Week and Easter Services

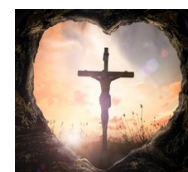
All at St Mary & St Botolphs Church, Whitton Church Lane.

Palm Sunday—13th April — 9.30am

Monday—Wednesday—14th—16th April —7.30pm—Service of Eucharist and
Reflection for Holy Week

Maundy Thursday—17th April —8pm. Eucharist with Washing of Feet
& Vigil

Good Friday—18th April —2pm—The Last Hour of the Cross—
Tenebrae



Easter Sunday—20th April — 8am—Said Eucharist



9.30am— Easter Day Service with Easter Ceremonies



Calling Mums, Dads, Grandparents and Childminders

Mums & Tots @ Whitton Parish Church

Come and join us with your little ones for fun, chat and play

Each Wednesday (during term time) from 1.15pm to 3pm

At Whitton Parish Church Hall, Whitton Church Lane.



We look forward to welcoming you and your little ones up to school age. Come and meet other parents and carers while you watch your little ones play, have fun and learn to socialise.

We have a wide variety of toys for your children to enjoy, and a book library where you can borrow a book to read at home.

We ask for £1 per session per family to help cover our costs, which includes snack time and activities.



So come along any Wednesday during term time and see for yourself.

For more details please contact Bridget on 01473 286663, or 07890311525

Or just come along, we look forward to meeting you





★ WHITTON YOUTH

★ PARTNERSHIP

★ Covering Whitton, Whitehouse and Castle Hill we currently provide Junior and Senior Youth Clubs, Single gender groups, detached youth work, one to one support, school holiday Craft and play and Youth drop in sessions.

★ All our activities are provided free of charge and free food is available at all activities based within Whitton Parish Hall where we are based.

★ Coming up this Easter

★ Craft and Play days on the following Tuesdays 8th and 15th April 2025. Booking essential as spaces go within hours of appearing on our Facebook page. See our Facebook page for details at

★ <https://www.facebook.com/whittonyouthpartnership/>

★ Youth drop in days on Thursday 10th and 17th April 2025. See the above Facebook page for details

★ Youth Clubs (held in Whitton Parish Hall)

★ **Junior Youth Club for Year 7** meets on Mondays during term time starting straight after School until 5.30p.m.

★ **Inters Youth Club for Years 8 and 9** meets on Tuesday's during term time starting straight after School until 5.30p.m.

★ **Senior Youth Club for Years 10 and above** meets on Tuesday's during term time starting 5.30p.m. until 9p.m.



Who invented the hot cross bun?

Thomas Roccliffe, a 14th-century monk, is widely credited as making the very first hot cross bun – and given the simplicity of his medieval recipe, he may well have disapproved of later embellishments to his original creation.

Although the Ancient Greeks, Romans and Saxons all baked a type of bun to mark the changing seasons, it was Brother Roccliffe who made the Alban Bun in 1361.

A sweet, fruity bake bearing a cross on top, the buns were given to the local poor on Good Friday. This Easter treat so pleased the recipients that word soon spread, and efforts were made across the country to imitate these cakes. By the 19th century, hot cross buns were commonly eaten on Good Friday to mark the end of Lent.



Ipswich Deaf Church now meet at the Ascension Church on the 2nd Sunday of the month at 2.30pm. The service uses **British Sign Language (BSL)** as it's source language with a voice over into English.

All the hymns are signed by members of Ipswich Deaf Signing Choir and the service is followed by refreshments. All are welcome to come along and join us.

For more information contact Rev Penny Brinkley Diocesan Chaplain with the Deaf Community email rev.pennybrinkley@yahoo.com or text to 07901950768

(Please note occasionally the service date may change so please do check if you are planning on coming)

Coffee morning—every Wednesday

9.30—11.30.

Why not pop along to Whitton church, Whitton Church Lane, and enjoy a cuppa.

You will find a friendly, warm welcome and a chance for a good natter!



FAMILY FIRST
Supporting families through change

FAMILY FIRST

Phone:- 0300 7727715

Email:- info@familyfirst-uk.org

Website:- www.familyfirst-uk.org

Facebook:- Family First Ipswich



Hello! My name is Lucy and I am the Schools and Children's Liaison Worker based at Whitton Parish Church. I came into post in September working one day a week, but since the beginning of March I have been working on Mondays and Tuesdays during term time. You will also find me at Altogether Church on the first Sunday of each month. I have been enjoying getting to know the parish and meeting lots of different people. I have begun to liaise with some of the schools locally and I am able to offer them support with their Religious Education curriculum as well as other projects. One of my first large projects is to bring Open the Book into schools. This is an initiative where a group of people bring a Bible story into schools in an interactive and accessible way. We also have an exciting event in April when Experience Easter will take place in the church. Groups of children from four different schools will be coming in to learn about the Easter story and to have a chance to participate in activities around this. These two initiatives very much need the support of volunteers. If you have some time to spare and would like to help please do contact me, I would love to hear from you.

A bit about me – I am a qualified teacher with 12 years experience of teaching primary age children. I'm also a mother of two boys, one is 6 and the other is 18 months. I absolutely love spending time with them. I really enjoy cooking - especially baking cakes and when I have time, I also really like to read a good book!

My contact details are lucy.schoolslink@whittonparish.co.uk.

To those of you that I have already met thank you for your warm welcome. I hope to meet many more of you in the coming weeks and months.

Could you be one of our Open the book volunteers?

The Parish of Whitton are looking to restart **Open the Book** assemblies in some of our local primary schools and are looking for volunteers!

If you can help, we would love to welcome you as an Open the Book volunteer.

What is Open the Book?

Open the Book is the sharing of bible stories with children everywhere through storytelling. Stories are shared in a fun and memorable way by a team of volunteers. The storytelling teams use the Open the Book programme to prepare a 10 to 15 minute scripted bible story to a school assembly.

How does Open the Book benefit schools?

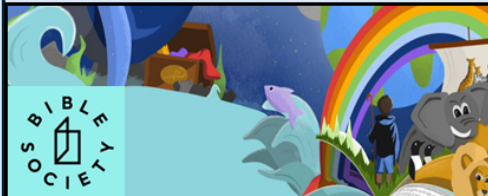
There are many benefits to schools!

- Giving the school a link with the community
- Providing opportunities for reflection time
- An engaging assembly for the pupils
- It is free to a school with no extra planning from staff!

If you would like to volunteer or would like more information please contact

Lucy Fisk - Email:

lucy.schoolslink@whittonparish.co.uk



Who is my Mummy?!

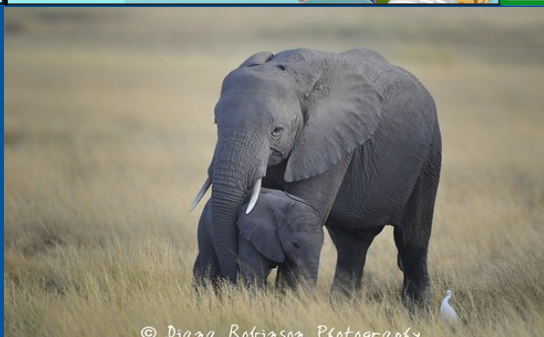
What are their babies called?

(Answers below)

1. Alligator
2. Bear
3. Elephant
4. Swan
5. Deer
6. Goat
7. Horse
8. Hare
9. Turkey
10. Kangaroo

- | | |
|-------------|----------|
| 1. Hatching | 9. Poult |
| 2. Cub | 10. Joey |
| 3. Calf | |
| 4. Cygnet | |
| 5. Fawn | |
| 6. Kid | |
| 7. Foal | |
| 8. Leverett | |

Answers to Quiz



© Diana Robinson Photography





Summer Fayre

Saturday 7th June

10am—12 noon

@ the Ascension Church, Larchcroft Rd

Tombola's

Cakes

BBQ

Raffle

Refreshments and much more!

Come and join the fun

Ladies Breakfast

We meet on the 3rd Saturday of each month, in our church at 9.00am for around an hour, to enjoy a Continental breakfast. We have croissants, toast, teacakes, and, so we can kid ourselves we're being healthy, fresh fruit!

We make a donation towards the cost, and that has meant we have helped several charities over the past months from the profits. These include "AFIA—Away From It All", a charity that helps families who need a short break/holiday to have one; And "Somersham Ward Supporters" at Ipswich Hospital.



We also put together "Little Bags of Love" to give to anyone we hear about who may just need a little hug. Please do pop in and join us — you will receive a warm welcome.



The Simnel Cake

A Simnel Cake is a baked fruit cake. Much lighter and with less alcohol than a Christmas cake, the main defining feature is the two layers of marzipan in the cake, one through the cake and one on top of the cake. Also sitting on top of the cake and lightly toasted are 11 further balls of marzipan. The marzipan balls represent the 11 faithful disciples and sometimes a twelfth placed in the middle represents Jesus. Here is where the whys start...

From medieval times, it is thought the name Simnel comes from the Latin *similia* which translates roughly as the "finest flour". This sense of importance surrounding the Simnel cake took on a new meaning later in Christianity when the Simnel cake was used as a treat to show appreciation on Mothering Sunday and provided a break from the strict dietary restrictions associated with Lent.

Another story that is sometimes told about the Simnel cake was that it came to be after an old couple Simon and Nell could not decide what they would do with excess pastry left at Easter, one wanted to boil the dough while the other wanted to bake it. They compromised by doing both and so the "Sim-Nel" cake was born. Today, as suggested by the story the cake is cooked twice, but now it is baked and grilled instead of boiled and baked as the original ones were.

Whether you believe in the origin stories around the Simnel Cake or not we will leave it up to you, but they're very tasty however they came to be!!



All change at the Ascension!

If you've passed by the Ascension Church/Hall in Larchcroft Road recently you will see that big changes are afoot. We are undertaking a complete uplift of the hall having received a number of generous grants, for which we are very grateful. We have already replaced the rotten woodwork and installed double glazing to the windows along the side of the building and new fire doors have been fitted at the back. All woodwork will be painted very shortly. The heating system has been modified to give us remote zone control, improving efficiency. Next will be a total uplift of all toilets to bring them up to current standards and this will be followed by a complete replacement of the building's leaking roof and front downpipes. The kitchen will then be given a make-over and the interior of the building re-decorated. The old store hut will be taken down in April and replaced with a more permanent pre-fabricated building. Finally, a tidy up of the car park & new fence at the front will complete our work which we hope will extend the life of the building for at least another 25 years.



Presents their performance of

The Wizard of Oz

At Whitton Parish Hall on 12th July @ 7pm & 13th July @ 3pm

Adult £4 Child £1

Tickets from: whikidz1@gmail.com



The Parish of
Whitton
with Thurleston & Akenham

-IS A FREE Singing and Drama Group for KS2+ children!



Sessions run on **Mondays** during term time **3.30pm-4.30pm.**

At **The Ascension Church, Larchcroft Road**

For more information contact **Becky** on 07878289197

or by emailing whikidz1@gmail.com



Are you planning a wedding? -

Did you know:

There are lots of ways you may qualify to be married in a Church.

That you do not have to be a regular church goer to do so.

That it usually costs less to do so than at other venues.

You can have a range of music not necessarily religious,

Each wedding is unique to the couple & can have many special moments and elements.

We have a stunningly beautiful church to be married in so why not have a chat and look round?

Contact Mrs Angela Marjoram 07950 086135 for a visit and friendly chat.

My husband Henry and I got married at St. Mary and St. Botolph's church on 3rd August 2024. We chose St. Mary and St. Botolph's because we were both christened at the church, both sets of our parents were married there, as were a host of other family occasions.

From the moment we set the date, to the wedding day itself, everyone involved at the church was fantastic. In the run up to the wedding, Mary and Angela were both very helpful guiding us through the process and answering all of our questions. We were supported through our choice of readings, hymns, order of service, flowers, everything!

Robert and Rebecca both worked with us to pick music and hymns that fit our ideas and what would sound best in the church, with their skills and expertise. Rebecca and the choir sounded amazing and helped everyone get in the zone with the hymns. Robert played flawlessly throughout.

On the day, Mary was brilliant. The service was conducted with professionalism and humour, and was so well tailored to suit our personal story and connection. She is so kind and adaptable, even when plans have to change unexpectedly!

We couldn't have asked for anything more from the whole team at the church, everyone was so incredibly supportive with making it the service we wanted. We had such a treasured wedding at St. Mary and St. Botolph's, and we couldn't have done it without you all.



Usual services at St Mary & St Botolph & the Ascension Churches

Sundays—1st in month - 8am Said Eucharist &
10 am—All Together Church
Not livestreamed

2nd - 4th in month—9.30am—Eucharist

All at St Mary & St Botolph,

Whitton Church Lane. These are livestreamed
<https://www.youtube.com/channel/>

Wednesday 10am—Eucharist at the
Ascension, Larchcroft Road

Every night at 9pm—
Short service of Compline at
"Parish of Whitton" Facebook page.



**Are you interested
in Baptism for yourself or your children?**

**Give Eileen Ardern a ring on 01473 252251
for information and a
friendly, informal chat.**

Look out for Mary & John
around the parish!

Email:
marysokanovic@outlook.com
Tel: 07824 323073

