



# The Westbourne Academy KS3 Art Journey

## Maximising potential within Art and Design



WESTBOURNE  
ACADEMY

Responding to still life artwork by chosen artists (part 1)

Drawing from primary and secondary imagery

Creating and developing ideas for a 2D final piece

Creating a 2D final piece

Still life (part 2) drawing from primary and secondary imagery

Design ideas

Experimenting with materials and techniques

Creating a 3D final piece

Producing a personal final piece based on the theme of identity

Creating and developing ideas for a final piece

What is William De Morgan best known for?

Mono printing

Creating a hybrid animal

Creating designs for a relief sculpture

Experimenting with mark making techniques

Introduction to mark making

Creating a collage in the style of a Cubist artist

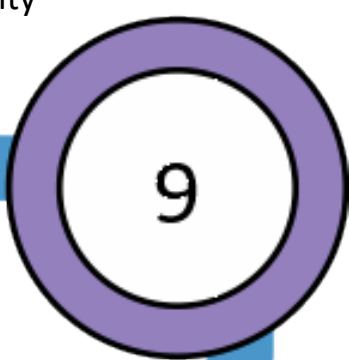
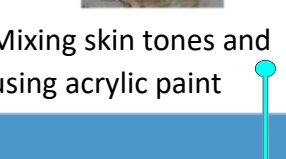
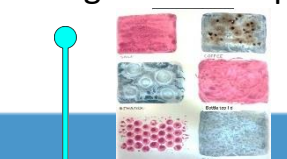
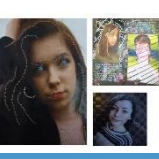
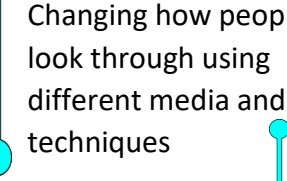
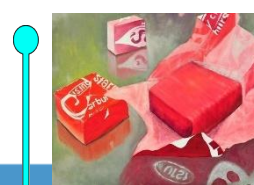
Introduction to Cubism and collage

History of still life artwork

Colour theory

Developing drawing skills

Exploring Formal Elements



GCSE Art and Design

GCSE Photography

Post 16 courses in a wide variety of creative pathways

Creating design ideas for a clay tile final piece

History of landscape art

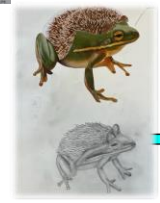
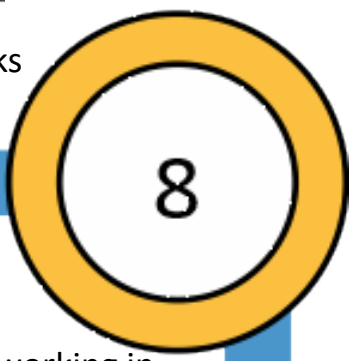
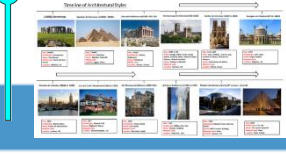
Perspective drawing

What is Fauvism?

Colour theory

Drawing and painting part of the school in the style of a Fauvist

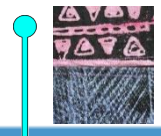
History of architecture



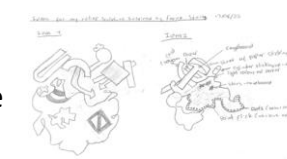
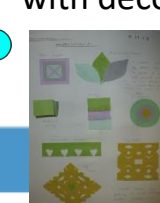
Animals and fantastical creatures

Experimenting with tie dye and printing inspired by African textiles

Creating a mask final piece



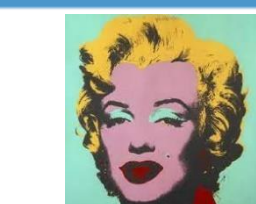
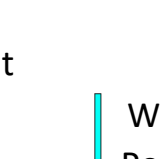
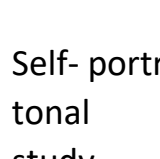
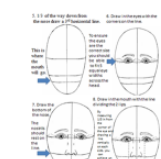
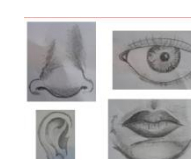
Design ideas



Creating a relief sculpture in the style of Frank Stella



Facial features, symmetry and proportions of the face



Learning about public art

Responding to African masks

History of masks

Using digital media and working in the style of Andy Warhol

What is Pop art?

Self-portrait tonal study

