



WESTBOURNE ACADEMY

# The Westbourne Academy KS4 Physical Education Journey

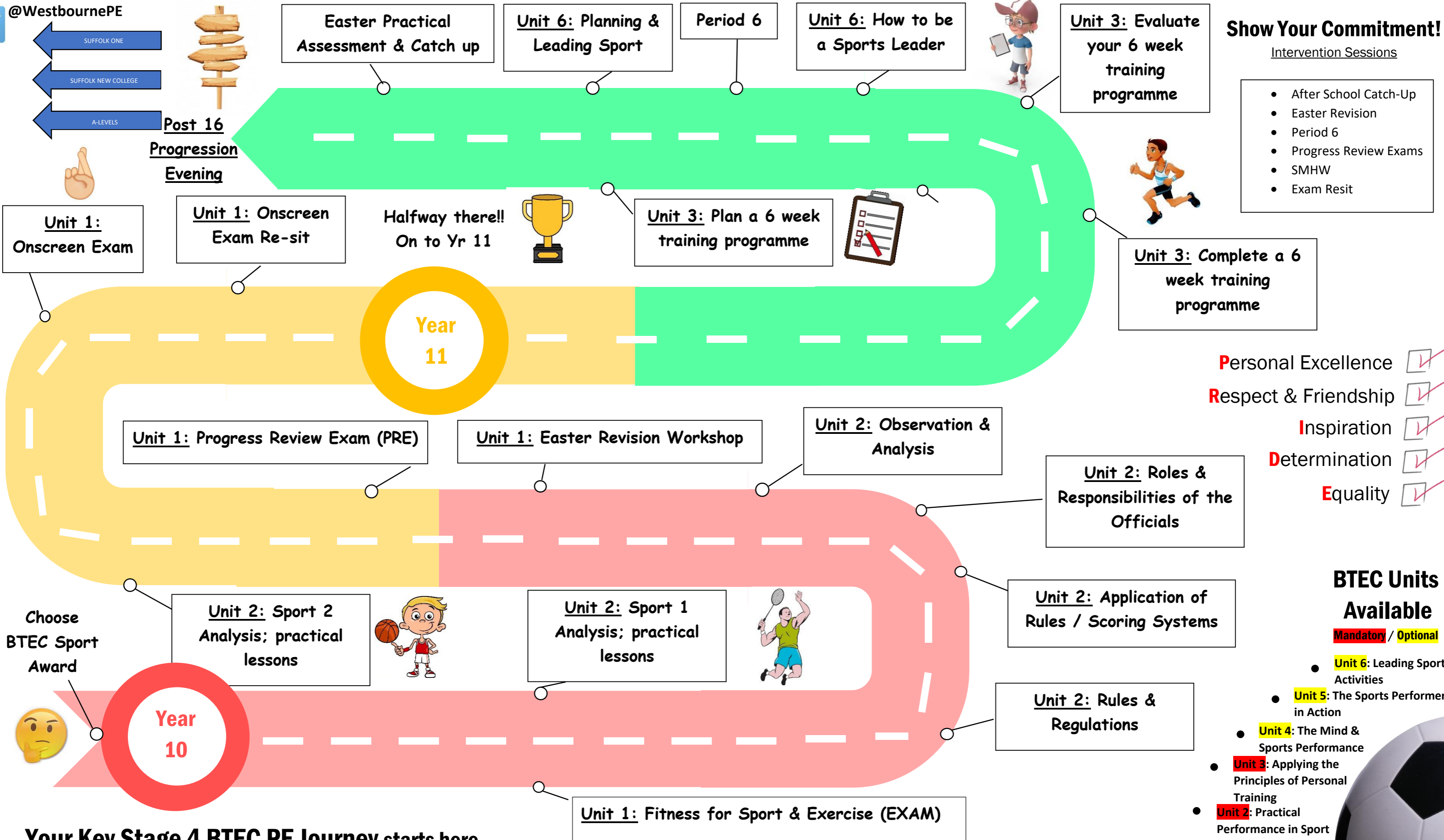
## Maximising Potential within Physical Education



westbourne.pe



@WestbournePE



### Show Your Commitment!

Intervention Sessions

- After School Catch-Up
- Easter Revision
- Period 6
- Progress Review Exams
- SMHW
- Exam Resit

- Personal Excellence
- Respect & Friendship
- Inspiration
- Determination
- Equality

### BTEC Units Available

Mandatory / Optional

- Unit 6: Leading Sports Activities
- Unit 5: The Sports Performer in Action
- Unit 4: The Mind & Sports Performance
- Unit 3: Applying the Principles of Personal Training
- Unit 2: Practical Performance in Sport
- Unit 1: Fitness for Sport & Exercise (Exam)

Your Key Stage 4 BTEC PE Journey starts here ...