

LEARNING JOURNEY



- Health**
- BTEC Level 1 Diploma Health and Social Care
 - BTEC Level 2 Extended Certificate Health and Social Care
 - BTEC Level 3 Extended Diploma Health & Social Care

- Childcare**
- CACHE Level 1 Diploma Caring for Children
 - Level 2 Award in Support Work in Schools and Colleges - Teaching Assistant:
 - CACHE Level 2 Diploma Early Years Practitioner
 - CACHE Level 3 Technical Diploma Childcare and Education - Early Years Education



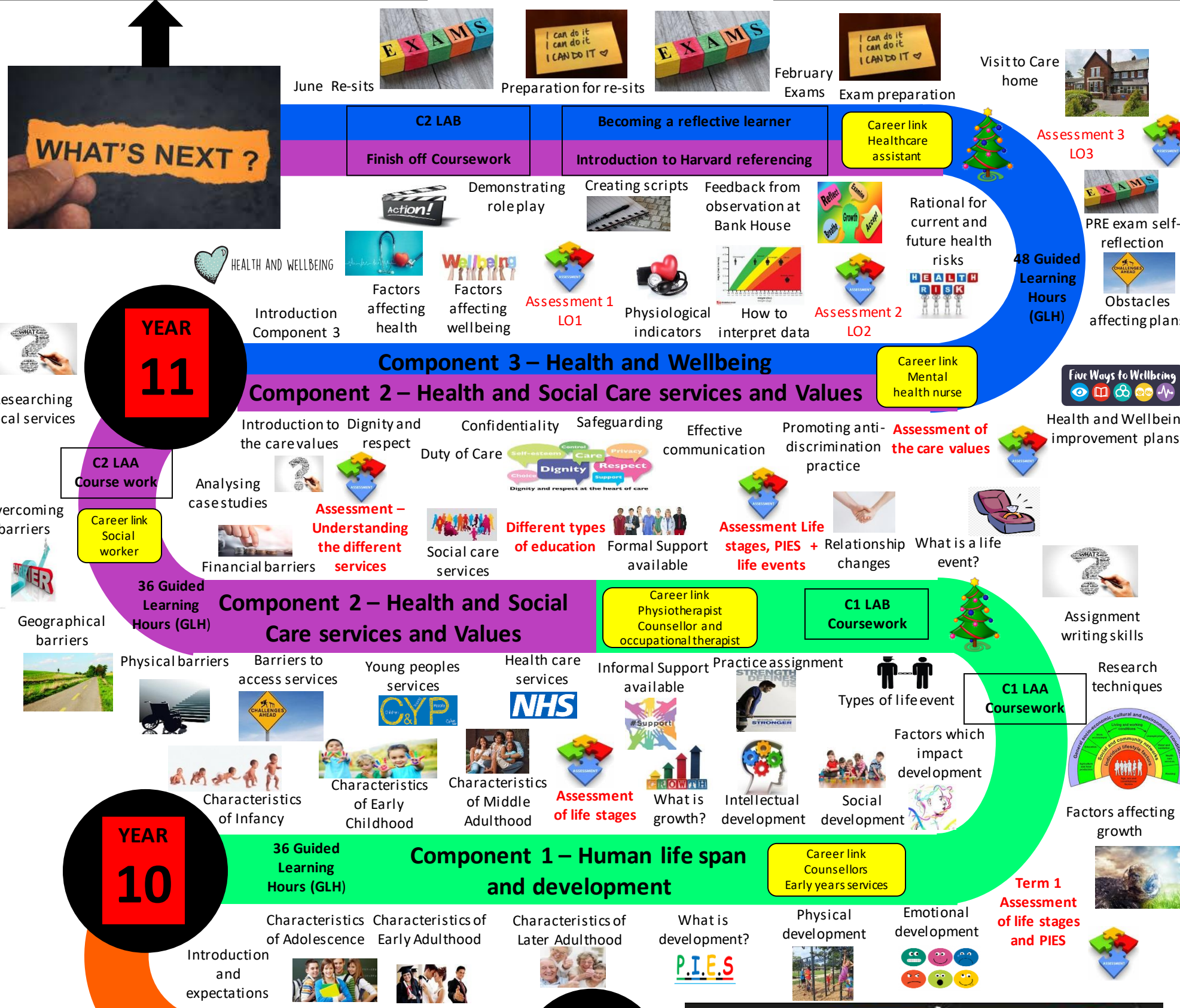
- BTEC Level 3 **Extended Diploma** in Health (5 GCSE's grade 9-4, including Grade 4 in GCSE English Language).
- BTEC Level 3 Health and Social Care **certificate** (You will need to add two other A-Levels)
- BTEC Level 2 **Diploma** in Health and Social Care (Taken with re-sits in English and Maths over one year, Suffolk One only)

"Commit yourself to lifelong learning. The most valuable asset you'll ever have is your mind and what you put into it." **(Brian Tracy)**



Some HSC/Childcare career pathways

- | | |
|----------------------|--|
| Healthcare Assistant | Early Years Practitioner (nursery nurse) |
| Carer | Nursery Assistant |
| Social Worker | Teaching Assistant |
| Nurse | Childminder |
| Midwife | Nanny (Norland) |
| Paramedic | Primary School Teacher |
| Support Worker | Residential Childcare worker |
| Youth Worker | Primary Teacher |
| Radiographer | |
| Physiotherapist | |
| Lecturer /teacher | |
| OPD | |
| Health visitor | |



- Transferable skills from across curriculum areas**
- Maths**
 - Compound interests (Y7,8) – Links to C1LAA + C2LAA
 - Representing Data(Y8) - Links to C3LAB
 - Data handling (Y8) – Links to C1LAA
 - Proportional reasoning (Y8) C1LAA
 - English**
 - Developing command words in line with BTEC criteria explain, describe, analyse, evaluate (Y7,8,9) – Links to all components
 - Essay construction (Y8) Links to all components
 - Reading and annotating text (Y9) Links to all components
 - Science**
 - Developing command words in line with BTEC criteria investigate, analyse and evaluate (Y7,8,9) – Links to all components
 - Development stages (Y7,8) – Links to C1LAA
 - Factors that affect health (Y7,8,9) - Links to C1LAA + C3LAA
 - Interpret data (Y7,8,9) – Links to Links to C3LAB
 - PSHE**
 - Resilience (Y7,8,9) – Links to time management for assessments
 - Mental health and wellbeing (Y7,8,9) – Links to Comp 3
 - Healthy active lifestyle Y7,8,9) – Links to C1LAA + C3LAA
 - Diet and exercise (Y7,8,9)Links to C1LAA + C3LAA



Aim
This subject offers students the opportunity to learn about those around us – the growth and development of the different life stages of humans and the many factors that affect these. It is particularly suited to those that wish to enter into the caring professions e.g.; education, social work, nursing, midwifery, counselling etc. It aims to give students the necessary life skills to make a difference in people's lives.

Teaching and Learning
A wide variety of teaching strategies are used in Health and Social care to make the lessons fun, challenging and informative. Individual theory, group work, role-playing and practical sessions, using ICT, research and application to real-life case studies all help make the subject more real for the students. Current health and social care issues in the news are discussed in class to encourage an opinion and provide background knowledge for course work.

Assessment for Learning
Students are assessed at regular intervals throughout the year and given both verbal and written feedback according to the task. Pupils are encouraged to self-assess and peer mark work where appropriate, setting individual targets. Chances are given for reflection and improvements to be made to work.

Home Learning
A variety of homework is set on a regular basis to reinforce classroom learning. This may include research, interviews or applying your knowledge to case studies. Insight – all home learning activities will be published on 'SMHW' which can be found by following the link on the school's homepage.

