

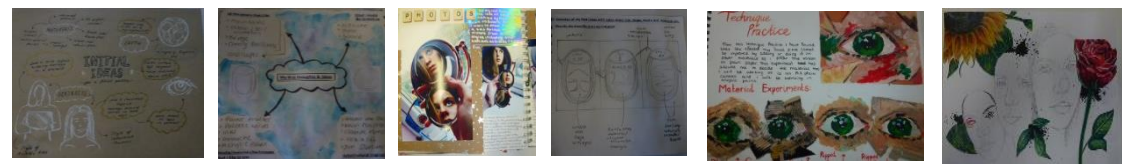


The Westbourne Academy KS4 Art Journey

Maximising Potential within Art and Design



Reviewing your direction as well as creating and developing ideas that will lead to a successful final piece.



A04: Two-day final exam creating a personal response that makes connections and relates to your prior work in A01, A02 and A03 and demonstrates your skills to the highest standard.

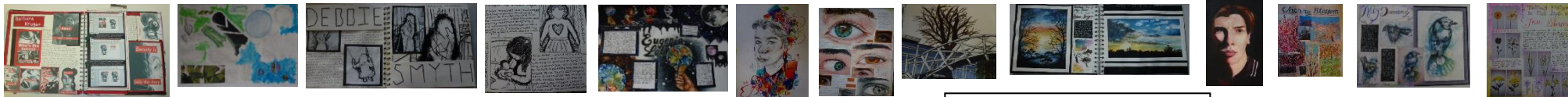


Post 16 courses in a wide variety of creative pathways

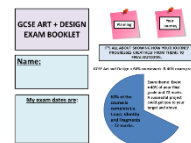
Producing a mood board that identifies the direction you will take as you explore the theme.



Creating a range of artwork that explores the theme in a personal and independent way and answers AO1, A02 and A03 to a consistent high quality standard.



Producing a mind map that explores initial thoughts about the theme.

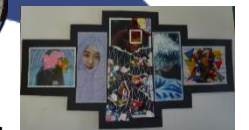


Exam paper handed out to students and the theme explored with support from GCSE Exam booklet and Pinterest.

Unit 2= 40% of the GCSE final grade
ESA (Externally Set Assignment) begins
1 term to complete the project.

End of Unit 1- All coursework handed in for mid-January deadline.

Two-day controlled assessment- final piece for Fragments created in exam conditions.



Creating and developing ideas that will lead to a final piece.



Summer home learning completed for September y11.



11

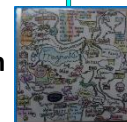
Workshops exploring the theme of Fragments.



Introducing Fragments exam paper.



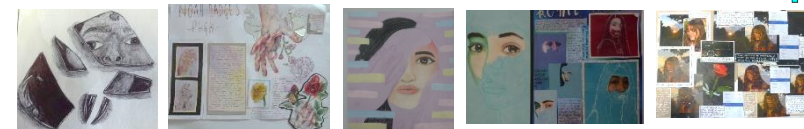
Producing a mind map that explores initial thoughts about the theme.



Producing a mood board that identifies the direction you will take as you explore the theme.



Creating a range of artwork that explores the theme in a personal way and answers AO1, A02 and A03.



Creating and developing ideas that will lead to a final piece.



Researching artists who create sculptures.



Workshops – experimenting with different materials and exploring 3D options.



Drawing animals from life and responding to artists work.



Drawing leaves, pinecones and trees.



Drawing fruit and vegetables



Drawing flowers from life and working in the style of a range of artists.



Drawing Anatomy



Working in the style of Duncan Cameron.



2nd coursework project 'Organic' begins.



Textile experiments using silk, batik, fabric collage and image-maker with stitching and beach signs.



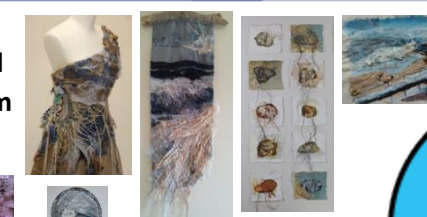
Personal artist research and working in their style.



Creating and developing ideas that will lead to a final piece.



Creating a textiles final piece in exam conditions.



10

Drawing fish and other sea life from primary and secondary sources.



Researching and then working in the style of Kurt Jackson and using own photographs as inspiration.



Paint experiments inspired by Kurt Jackson.



Drawings of shells in pencil and a range of media.



Year 9 summer home learning celebrated and used to start the 1st coursework project 'Coast'.



Unit 1= 60% of the GCSE final grade. It is divided into 3 coursework projects which have the deadline of mid-January in year 11.